



AVAWIRE

December 2010



Happy Holidays from all of us at AVAware Technologies

This year our offices, including our technical support department, will be operating at full capacity each and every business day during the holiday season.

December 12, 2010 marks our 14th birthday!

We've come a long way from our first DOS-based CAD application. We'd like to thank all of our loyal customers and vendors who've supported us along the way. **AVAware** software is in use by hundreds of companies spanning three different continents.



New Catalog: K2



K2 is the latest manufacturer created under the Black & Decker Hardware & Home Improvement Group (BDHHI). Home to other architectural opening hardware manufacturers including Baldwin and Kwikset, the BDHHI Group spans five brands in total. The K2 brand represents premium design at a value price along with operational excellence.

History

The Black & Decker Hardware & Home Improvement Group is part of the Stanley Black & Decker family. Although only recently merged, both companies individually date back over a hundred years, with a rich history of innovation and quality products.

Frederick Stanley opened his small hinge and wrought iron shop in 1843, while S. Duncan Black and Alonzo G. Decker started a small shop in 1910. From similar beginnings, both companies grew into industry giants, creating a renowned family of brands. A century later, Black & Decker and Frederick Stanley became Stanley Black & Decker, merging with the purpose of delivering industry leading tools and solutions to all markets.

BDHHI created K2 as the face

of their commercial hardware products. K2 was branded after the mountain of the same name, the second highest peak in the world, because of what it stands for; strength, durability and beauty.

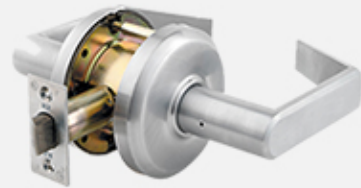
Products

K2 commercial hardware products include cylindrical and tubular levers, auxiliary deadbolts, exit devices and door closers, with a suite of designs to create "architecturally pleasing" hardware.

Contact us to Subscribe

If you wish to subscribe to the K2 catalog, contact us at support@avaware.com, call us directly, or download the catalog order form from our website.

Visit the [K2 website](#) for more information about their products.



K2 QCL250 Pinnacle Lever Entry Set



K2 Deadbolt Cylinder

What BIM means to Us

What effect, if any, does BIM have on the architectural openings industry?



The last few weeks have brought some new and interesting developments involving BIM, both in the news and internally at **AVAware**.

As we mentioned in the November 2010 edition of **AVAwire**, BIM has become an extremely popular topic lately, and only seems to gain more recognition each year. Just this year, the U.S. Army Corps of Engineers began to require the use of BIM for all vertical military construction projects.



The General Service Administration (GSA) have used BIM based projects for some time, with the requirement of AEC (Architecture, Engineering and Construction) industries to produce BIM documents before any final presentation, beginning in 2007.

It is clear that BIM based projects will only grow in number as BIM continues to gain recognition on the government level. As such, we have been reviewing how BIM

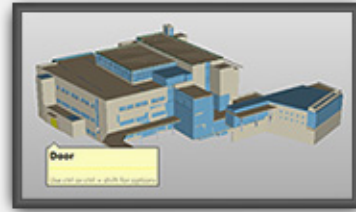
impacts the architectural openings industry, and how it can be leveraged with **AVAproject**.

Our preliminary research shows that while BIM documents contain a significant amount of information, very little of this is specific to door hardware or type.



Most of the data contained in a BIM document is used to construct a viewable model, and not to specify hardware.

In order to understand what data is contained in a BIM document, we must first understand how a BIM model stores its information. Every object in a BIM document, be it a wall, pipe, duct or door, is stored as a line entry or in a tag. Tags can specify relationships between objects in order to provide more detail, such as the size and material of a pipe or duct. What we as an industry are interested in are door tags; what information can we pull out of them? Unfortunately, most of the data contained in a BIM document is used to construct a viewable model, and not to specify hardware. While size and placement of an opening are very clearly listed, there is little



Sample BIM model

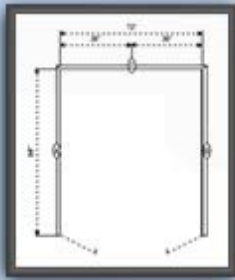
information about the type of door and, based on the sample files we have interrogated, no information about door hardware, elevations or profiles.

BIM is often viewed as the answer to many shortcomings of construction planning and coordination; a file format that can carry all the information about every component of a building. But where does this information come from and who enters it into the BIM file? The BIM format shows promise for the future, however at this point it does not appear to be of much use for our industry.

These are our initial results from our investigation of BIM documents - our analysis is still ongoing. We will keep our customers and readers informed of any new developments.



AVAproject Tip: Using Custom, Sample, and Auto-Generated Frame Elevations Effectively



Elevation generated by
AVAproject

Auto-Generated Elevations

Auto-Generated elevations are enabled by default, and are created by **AVAproject** when no elevation is attached to an opening, but all other required information has been entered. Auto-Generated Elevations do not need to be drawn by the user and instead are based off of the information entered for openings.

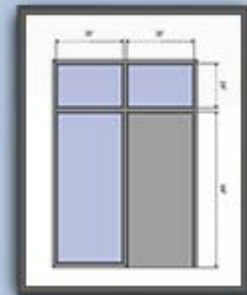
Auto-Generated Elevations should be used when the desired frame is a standard three sided frame and door. For variations in door type, the door can be modified in place, positioning various elements such as lite kits and louvers.

Custom Elevations

Contrary to Auto-Generated Elevations, Custom Elevations populate information into columns based on a drawn elevation. Custom elevations can be drawn by the user, or can be selected from a list of sample elevations already shipped with **AVAproject**.

Using Sample Elevations

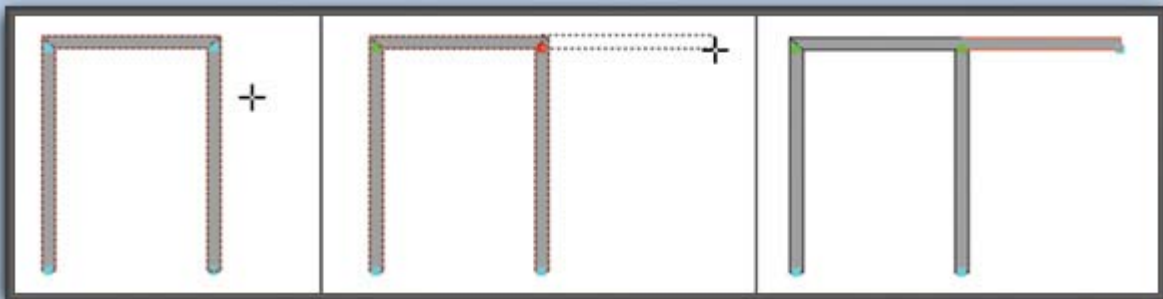
Sample Elevations are **AVAcad** drawings which are shipped with **AVAproject** and are ready to be used for opening(s) in the openings schedule. When choosing an elevation for an entry in the openings schedule, navigate to the sample elevations path (by default, "*C:/Program Files/AVAware/Sample Elevations*", or for 64-bit operating systems, "*C:/Program Files (x86)/AVAware/ Sample Elevations*") on your computer, and choose the elevation you wish to attach.



Sample Elevation

Creating Your Own Elevations

Often an existing sample elevation closely resembles the elevation you need to create, in which case you can open a sample elevation with **AVAcad**, modify it and save it as a new elevation. If you need to create an Elevation that is not included as a sample elevation, you can create your own custom elevation with **AVAcad**.



Creating a Custom Elevation using AVAcad

AVAproject Exports



Most AVAproject users are familiar with the AVAproject file extension (.apj), as it is the standard file extension to which AVAproject files are saved. For your convenience and extensibility, we also provide several other formats that your projects can be exported as.

Text Export



The Text Export outputs your project information into a text file organized into logical sections which correspond with the way information is entered into **AVAproject**. Every line consists of tab delimited data, making it easy for developers or third party software to interpret.

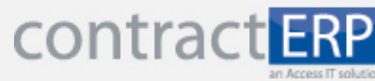
your project data into a relational database. These database files can be opened with Microsoft Access directly, or by standard Windows database components that are simple to use and well known by Windows software developers, and makes for simple and efficient searching, grouping and sorting.

for the architectural openings industry.

AVAproject 2010 includes a brand new AccessIT export, dramatically improving the integration between the two applications.

For more information about **AVAproject** Exports, see our [Data Connectivity Document](#). Additionally, developers can download our Exports Sample Package from our Website under "Downloads".

Access IT Export



MDB Export



Our MDB (Microsoft Access Database) export organizes

Contract ERP (An AccessIT product) is a powerful accounting and backend system

We welcome any questions, comments or suggestions you may have. Please visit our website for more information, or contact us directly at (416) 239-9099.



AVAaware Technologies
2897 Brighton Road
Oakville, Ontario, L6H 6C9

Phone: (416) 239-9099
Fax: (416) 239-9199
Web: www.AVAaware.com